



# i3

## Multipurpose Color Ultrasound System



IMAGING SYSTEMS



# i3

## Color Ultrasound System



*The revolutionary i3 provides you outstanding 2D images and fast 4D volume images, while the streamlined workflow makes you busy practices much easier and efficient.*



### Same Platform, Higher Performance:

- Multiple beam former
- Compound imaging
- i-Image™: image optimization software
- SRA: Speckle reduction algorithm
- THI: Tissue Harmonic imaging
- Color X-sensetechnology
- PW automatical trace and correction
- 4D real-time volume imaging

### Application:

- Abdominal
- Obstetrics
- Gynecology
- Vascular and Small parts
- Pediatric
- Urology
- Musculoskeletal

## Seven one key functions

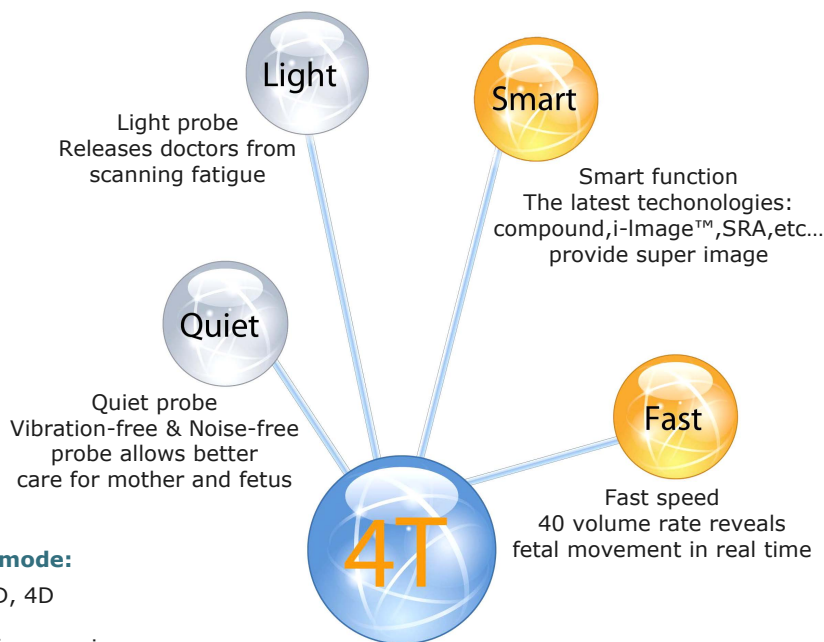
- **One key to AIO**
  - Automatic image optimization
- **One key to Measure**
  - Auto trace PW
- **One key to Save**
  - Save both in frozen mode and real time
- **One key to Report**
- **One key to Print**
- **One key to Review**
- **One key to Language exchange**
- **One key to Upgrade**
  - System upgradable and won't lose the original images and data.
  - One key upgradable. Software & Hardware
- **One key to Data-transfer**
  - 3 choices, easy to submit for insurance, to comply with EMR and other regulatory requirements
  - 1: USB auto-backup : Transfer to USB directly.
  - 2: Manual Transfer: Copy folders from Local disk to USB
  - Backup : Save to USB in original ultrasound format.
  - Recover: Retrieve the 'backup' original data to ultrasound system from USB
  - Send to: Copy folders to USB, images and reports are saved in PC-readable format.



## 4D Real-time Volume Imaging (OPTIONAL)

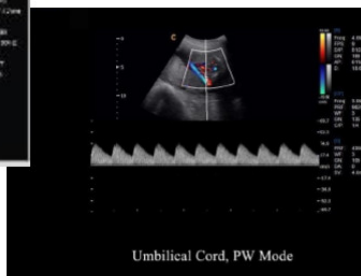
### 4D function with "4T" features:

- **Quiet**
- **Light**
- **Fast**
- **Smart**



### 4D function support color and Doppler mode:

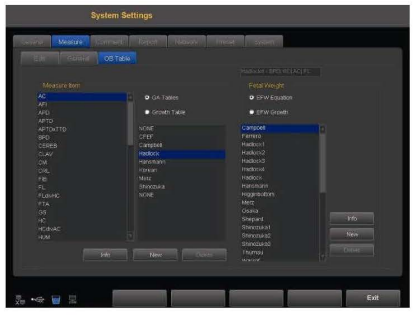
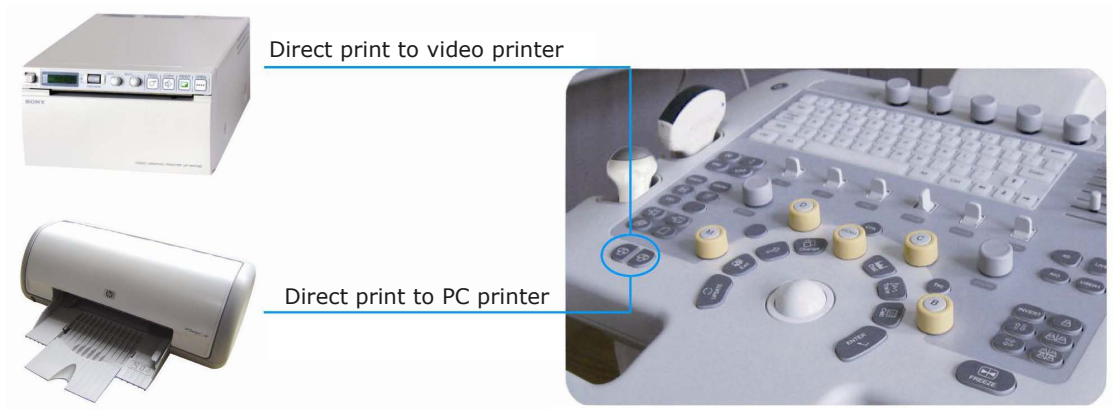
- One probe can cover all the mode: B, C, D, 4D
- Save money
- Save time, no need to change the probe for scanning





## Streamlined Workflow

The multi-purpose user presets, streamlined measurement & report system, built-in EasyView image archive system, quick image storage/retrieve/transfer, one-button direct print, 4D direct burning to CD makes the complete workflow more perfect than what you can dream of.



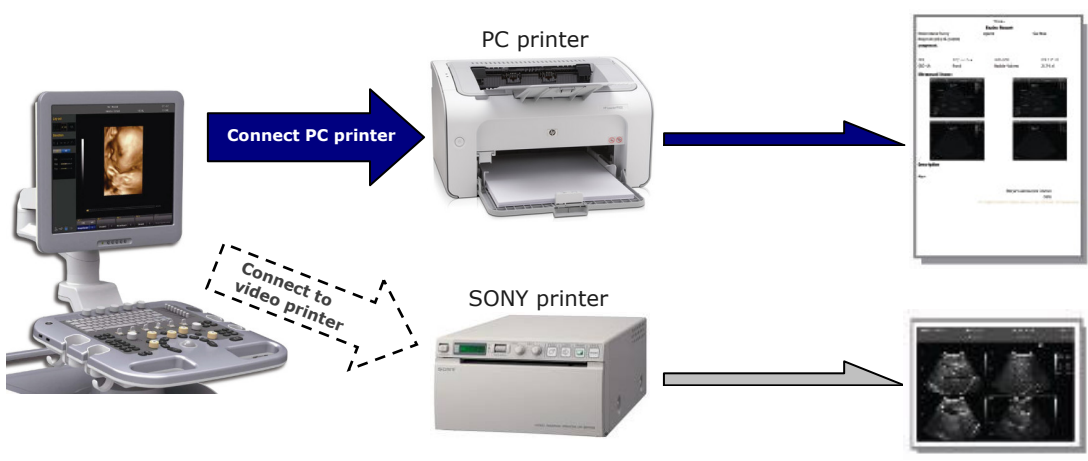
Various Measurements



Detailed Reports



EasyView™ image archive system



**Benefits**

- PC printer is less expensive than SONY video printer
- A4 paper saves more cost than thermal paper for everyday use
- Detail report can be printed (with images, measurement results, patient information)
- More expensive
- Can ONLY print images

## Integrated compounding imaging



Before

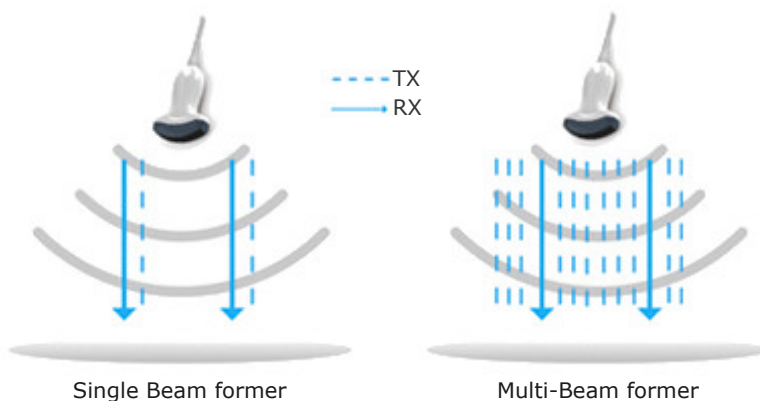


After

Improve image resolution and penetration

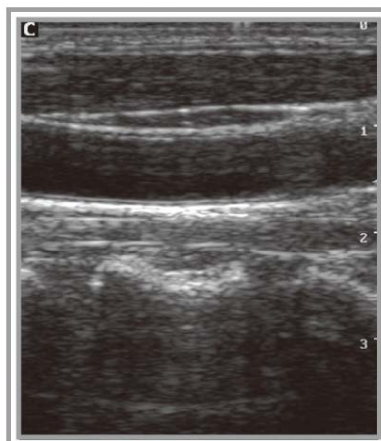
## Multi-Beam former technology

- Enhance signal processing speed
- Enhance time resolution
- Improve picture frame rate
- Improve spatial resolution



## Advanced technology

SRA is the technique that uses a variety of denoising Algorithm to suppress speckle, smooth the tissue images, and make the faint edge more appearing.



Before



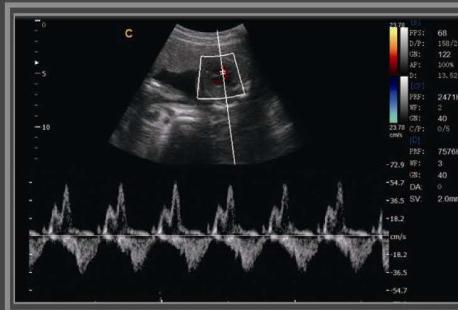
After



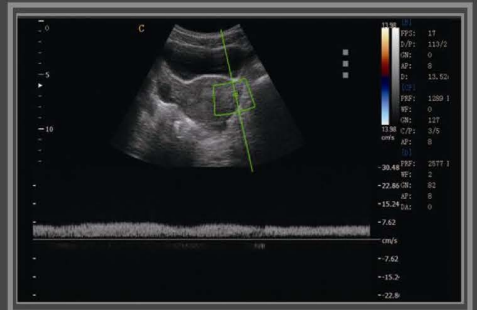
# Clinic Value &



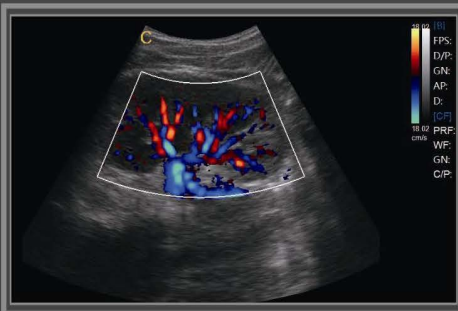
Twins, B Mode



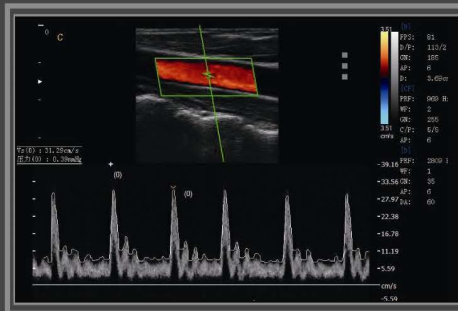
Fetal Heart, PW Mode



Uterus, PW Mode



Kidney, CFM Mode



Carotid, PW Mode



Kidney, B Mode



Fetal Face, 27 Weeks



Fetal Face, 30 Weeks



Fetus, 18 Weeks

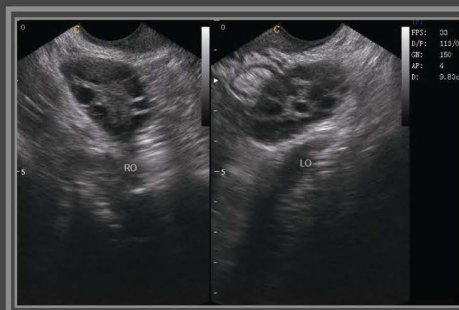
# Applications



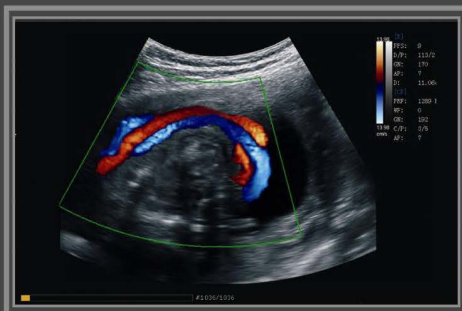
Fetal Hand, B Mode



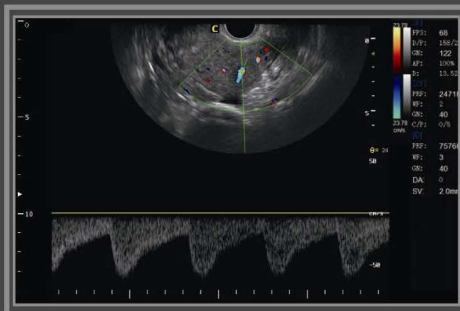
Fetal Profile, B Mode



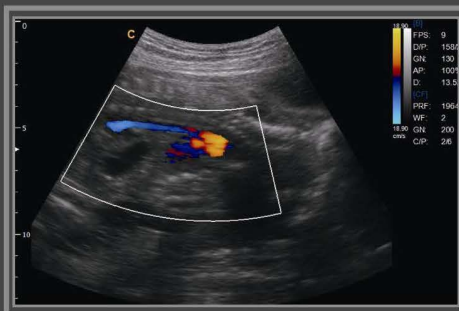
Polycystic Ovary Syndrome, 2B Mode



Umbilical Cord, CFM Mode



Hystero-myoma, PW Mode



Aorta of Fetus, CFM Mode



Fetal Face, 33 Weeks



Early Pregnancy, B Mode



Follicles Monitor after Therapy, B Mode

## Tecnical Features

### Imaging modes

- B, 2B, 4B, B/M, M
- CFM
- PW Mode
- Power Doppler/Directional PD
- Duplex
- Trapezoidal
- Real-time 4D (Option)
- Chroma B/PW

### Probes

- 3.5MHz Convex probe
- 7.5MHz Linear probe
- 6.0MHz Transvaginal probe
- 4.0MHz 4D Volume probe
- 7.0MHz Transvaginal probe(180°)
- 3.0MHz Micro-convex probe (adult Cardiac)
- 5.0MHz Pediatric probe
- Wideband, Multi-frequency

### Image processing technology

- THI
- Speckle Reduction Algorithm (SRA)
- Compo!Ind technology
- i-Image™: image optimization software

### Measurement & Report packages

- OB&GYN
- Vascular
- Urology
- Small parts
- Basic cardiac

### Widely Clinical Applications

- Abdominal
- Obstetrics
- Gynecology
- Vascular and Small parts
- Pediatric
- Urology
- Musculoskeletal

### Standard configuration

Main unit, 19" LCD, 4 probe connectors, Hard disk (320GB), DVD-RW, 6 USB ports

### Options

- 3.5MHz Convex probe
- 7.5MHz Linear probe
- 6.0MHz Transvaginal probe
- 7.0MHz Transvaginal probe(180°)
- 3.0MHz Micro-Convex probe (adult Cardiac)
- 5.0MHz Pediatric probe
- 4D package: including 4.0MHz 4D volume probe, 4D software and 4D hardware module
- Video Printer: SONY UP897MD
- PC Printer (any USB PC printer)
- DICOM 3.0
- i-Image™ : image optimization software
- Biopsy kit: for convex, linear, TV probe
- Foot-switch



3.5MHz  
Convex  
**D3C60L**



7.5MHz  
Linear  
**D7L40L**



6.0MHz  
Transvaginal  
**D6C12L**



4.0MHz  
4D Volume  
**V4C40L**



7.0MHz  
Transvaginal  
**D7C10L(180°)**



3.0MHz  
Micro-Convex  
**D3C20L**



5.0MHz  
Pediatric  
**DSC20L**